



SWIFT

~~~~~  
Your Home Anywhere

**Holiday Lodges**







# Welcome to Swift

# UK's No.1 brand for leisure vehicles

We are the UK's largest manufacturer of touring caravans, motorhomes and holiday homes. We've grown from simple foundations back in 1964, when our founder Ken Smith built his first touring caravan, to become the UK's number one leisure vehicle brand.

Our philosophy is to build leisure vehicles that are at the heart of your holiday, whether that be nestled in the countryside or by the sea, searching out active pursuits or simply enjoying a quieter pace of life. With a lifetime of memories waiting to be made, it's time to find your ultimate holiday lodge.



## Contents

|                               |           |                         |           |
|-------------------------------|-----------|-------------------------|-----------|
| Five steps to lodge ownership | <b>5</b>  | Montreal Lodge          | <b>22</b> |
| Find your happy place         | <b>6</b>  | Vendee Lodge            | <b>26</b> |
| Trends and design insights    | <b>7</b>  | Range at a glance       | <b>30</b> |
| Why Swift?                    | <b>8</b>  | Exterior finishes       | <b>32</b> |
| The Swift Difference          | <b>9</b>  | Lodge dimensions        | <b>34</b> |
| Toronto Lodge                 | <b>10</b> | Swift approved partners | <b>35</b> |
| Edmonton Lodge                | <b>16</b> |                         |           |

# Get away from it all

At Swift, we want your holiday home to become your sanctuary - a place where you can truly unwind, relax, and let the stresses of everyday life melt away. Our unwavering dedication to innovation ensures that we deliver products that are not only luxurious but also practical. With each stay at your Lodge, you're not just enjoying a holiday, but crafting cherished memories that will last a lifetime.





# Five steps to lodge ownership

Your very own holiday lodge opens up endless opportunities for breaks away and making memories for years to come. But knowing where to start can be overwhelming; what aspects do you need to consider? What lodge is for you? How do you choose your favourite holiday park? We know the questions can feel exhausting, so we've put together a handy guide to get you started on your quest to find your dream lodge at your perfect location.

## Step One

### Is lodge ownership right for me?

If you're seeking regular breaks throughout the year along with the freedom to come and go as you please, then lodge ownership could be right for you. Ownership gives you the opportunity to spend quality time with your friends and family, as well as the opportunity to pursue and enhance your favourite hobbies – whether that be walking or cycling, an interest in wildlife and nature, or just simply to enjoy the peace that a regular escape can offer.

## Step Two

### Finding your dream park

This is perhaps the most important step, so we encourage you to really take your time and be very thorough with your research. Getting this step right will ensure you years of happiness.

We've created a destinations page showing highlights of top UK destinations:

[swiftholidayhomes.co.uk/destinations/](https://www.swiftholidayhomes.co.uk/destinations/)

## Step Three

### Visiting the parks

Once you've established everything you need from a holiday lodge, create a shortlist of your favourite parks, so you can visit each one to help you choose the one that's right for you.

## Step Four

### Choosing your lodge

At Swift, we dedicate a lot of time to fully understand your holidays and what makes them special. Our lodges are made with the finest materials from leading suppliers, and with space at a premium, storage design is an important aspect. Both finish and practicality are of utmost importance, and this combination ensures Swift remains a popular choice.

You'll need to consider the level of specification you want – at the top end, features such as a dishwasher and a wine cooler can come as standard, while some of our lodges might offer these as an optional extra. So, take your time to figure out what additions you need to make your holidays special.

## Step Five

### What happens now?

Now you've chosen your lodge, your hard work is done, and you just need to wait for the keys! Your park and dealer will work together to ensure a smooth handover, taking care of the transport, siting, connections and commissioning. When you pick up your keys, your park will typically provide a full handover, taking you through your new lodge to ensure you are confident with how everything works and answer any questions you may have.





# Finding your happy place

Choosing your perfect location is one of the most important decisions you'll make when purchasing your lodge. But with so many beautiful locations across the UK and Ireland, it can be tricky to pin down your ultimate destination. From speaking to customers, we believe that choosing a holiday park within a 2-3 hour drive is optimum for ensuring you can make the most of your lodge.

For holiday inspiration, we've put together a selection of videos on our website showcasing key highlights from different regions. We've also done the hard work, so you don't have to, and have collated a list of holiday parks across the UK and Ireland, with contact details and website information so you can book a visit. For more information visit: [swiftholidayhomes.co.uk/destinations/](https://www.swiftholidayhomes.co.uk/destinations/)





# Expertly designed and crafted



**Jessie Milburn**  
Design Lead

We follow research insights and trends to keep ahead of the designs that appeal to both today's and tomorrow's customers, while also taking the time to understand what design aspects are important to you and your holiday lifestyle.

Today's trends involve a higher degree of ecological and environmental considerations, and at Swift, we share these values in our design and manufacturing decisions. We aim to replicate the natural world in both colour and material choices across all of our products.



Keeping on top of the trends through observation and research, we have seen a change in how our holiday homes are now used. Today, leisure and work can comfortably mix, and our holiday homes become more than just a place to relax and unwind. They now present an opportunity for home working, which creates a new design vision and consideration for our holiday homes and lodges of the future.



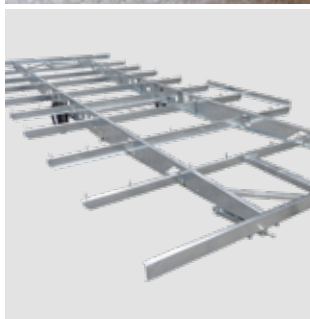
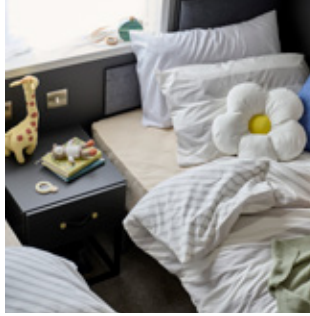


# Why Swift?

There's no better feeling than stepping into your lodge for a relaxing getaway, so we do everything possible to make that feeling last for years to come.

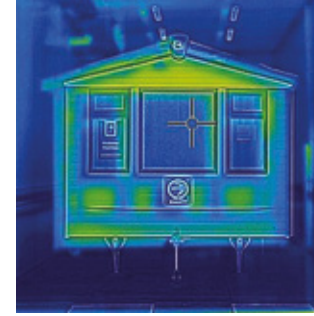
We pride ourselves on applying superior manufacturing quality to everything we produce, giving you the confidence that your investment is protected and built to last.

With the comfort of total assurance in your purchase, you can get on with the important things in life - creating lasting memories. And prioritising your peace of mind, we offer outstanding warranties, including a 3-year Manufacturer Supersure Warranty, 5-year Structural Warranty and 10-year Chassis Warranty.



## Exclusive Duvalay™ mattresses

All beds feature indulgent Duvalay™ mattresses for the best nights' sleep



**High thermal efficiency**  
Enjoy outstanding thermal efficiency, proven by environmental chamber testing and calculations

## Bonded exterior walls

'Sandwich' construction walls provide a more rigid exterior, bonded with insulation in the middle



**Integrated fridge freezers**  
Integrated fridge freezers are included across all ranges to maintain a sleek, uncluttered look

## Electrical and USB sockets

Stay connected with electrical and USB sockets in selected areas keeping everything charged



## Externally vented extractors

Keep your lodge fresh and dry with externally vented extractors, preventing damp and odours

## Stain resistant carpets

With stain resistant carpets, there's no need to waste your precious holiday time scrubbing



## LED ceiling lights

Benefitting the environment and your pocket, bright, low energy LED lighting is included throughout

## Fully galvanised chassis

Protecting your lodge, Swift's robust, Protech 900 or I beam chassis resist corrosion and is warrantied for 10 years



## Integrated microwaves

Optimising valuable work surface space, all Swift Lodges feature integrated microwaves





# The Swift Difference

## Roof trusses

For accuracy, strength and reliability, all Swift Lodges have prefabricated roof trusses. The resulting roof strength meets Grade B snow loading (capable of carrying half a metre of settled snow), while glass wool insulation provides excellent thermal efficiency.

## Wall construction

Our bonded 'sandwich' exterior wall construction gives greater structural strength. The walls are made in modules and are clad with CanExel. Each module consists of a robust timber frame, battened out and filled with insulation and a plywood inner skin.



### 3-Year Supersure Warranty

Your lodge has 3-year cover for all parts and fittings (other than the structural exterior).

This includes items like:

- Freestanding furniture
- Kitchens
- Showers
- Sanitaryware
- Sockets and switches
- Interior doors and integrated furniture
- Gutter and fall pipes



### 5-Year Structural Warranty

Your lodge has a 5-year Structural Warranty and Swift will repair (or, at its option, replace) any defects with the structural integrity of the home that come to light and are notified to Swift during the warranty period.

The Structural Warranty covers any defect with the seams of the home, including water ingress through any permanently sealed seam joints and also items like:

- External doors
- uPVC windows
- Roof, walls and ceilings
- Carpets



### 10-Year Chassis Warranty

Your lodge has a fully galvanised chassis with a 10-year Chassis Warranty, subject to maintenance. Swift will repair (or, at its option, replace) any defects with the chassis that come to light during this period, but only for as long as the home belongs to its first owner.

All warranties start from the date an approved Swift Group dealer or park operator transfers the unit to its first owner and are subject to conditions, terms and exclusions. For full details see [www.swiftholiday-homes.co.uk/owners](http://www.swiftholiday-homes.co.uk/owners)

## Double Glazing

Heat-reflecting 'Thermaglas' double glazing, which is Argon Filled and fitted as standard in our lodges or as an option on our holiday home ranges.

## Chassis

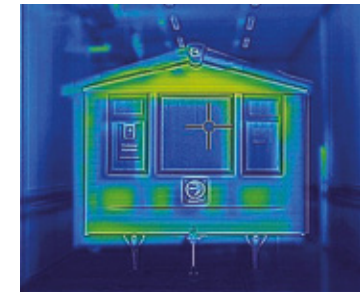
Swift only specify a fully galvanised chassis as standard. What's more, every Swift Lodge comes with a 10-year anti-corrosion warranty.

## Floor construction

In Swift Lodges, the thermal efficiency is enhanced with Structural Insulated Panel (SIPs) flooring, consisting of a timber frame with floorboards either side, which is injected with polyurethane, giving a greater level of insulation for all year round living.

## Construction and thermal efficiency

Swift's Lodge range is built to BS 3632, and meets the NCC Energy Efficiency Rating Scheme for Residential Park Homes. This specification sets a higher standard for thermal efficiency through improvements in roof, wall and floor insulation.



## Safety comes first

All our lodges and holiday homes are built in accordance with British and European standards and are audited against these build standards by the National Caravan Council (NCC).







## Toronto Lodge

The twin unit Toronto Lodge is the epitome of luxury, with its refined design, spacious living areas, state-of-the-art kitchen and sublime bathrooms. With an option of two or three bedrooms and offering a choice of two interior schemes, the 'Urban'; designed to bring the best of industrial style to your home with blends of natural wood and dark clean finishes, or the 'Country Cottage' with its charming traditional style in calming tones creating the perfect country retreat – there is a Toronto for everyone and the perfect escape into luxury living.

| Model size | Bedrooms | Main Bed                    | Twin Beds                   | Rear Twin                   |
|------------|----------|-----------------------------|-----------------------------|-----------------------------|
| 43' x 20'  | 2        | 2.02m x 1.53m (6'8" x 5'0") | 1.83m x 0.92m (6'0" x 3'0") | N/A                         |
| 43' x 20'  | 3        | 2.02m x 1.53m (6'8" x 5'0") | 1.83m x 0.92m (6'0" x 3'0") | 1.83m x 0.92m (6'0" x 3'0") |



'Country Cottage' interior scheme

## Features at a glance

Along with the Swift key features on page 8, Toronto also comes with many desirable extras including:



Central heating



Double glazing



Electric fire



Bath



Wine cooler



Washer / dryer





'Country Cottage' interior scheme



'Country Cottage' interior scheme



'Country Cottage' interior scheme



'Country Cottage' interior scheme



'Country Cottage' interior scheme



'Country Cottage' interior scheme





'Urban' interior scheme



'Urban' interior scheme



'Urban' interior scheme



'Urban' interior scheme

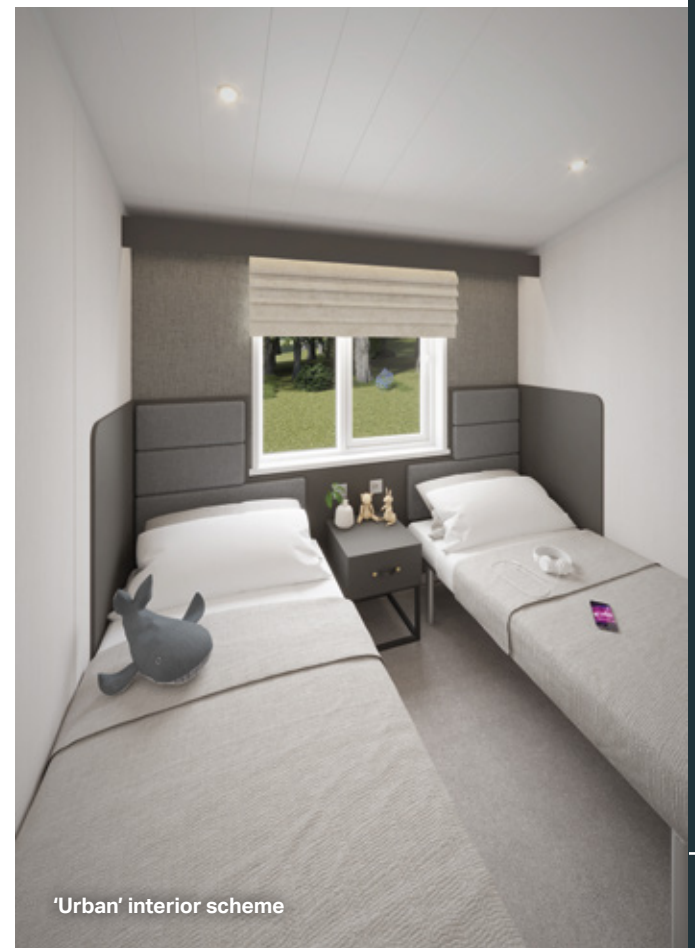




'Urban' interior scheme



'Urban' interior scheme



'Urban' interior scheme



# Toronto Lodge full features

## EXTERIOR

- Residential specification built to BS3632:2023
- 20ft twin unit with 10ft and 10ft split
- Strong Protech 900 series chassis galvanised finish warranted for ten years
- Bonded sandwich exterior wall construction for greater strength
- Coated steel pantile roof
- CanExel high density wood composite cladding with durable realistic woodgrain texture with contrast split colour exterior in 'Black' and 'Timberwolf' with anthracite window frames
- Front sliding door
- Large front feature window to dining area
- uPVC windows with push-button security locks
- PVC gutters and down pipes
- Low energy exterior light and downlights under front eaves
- Exterior 240V mains socket

## INSULATION

- Excellent thermal performance and sound insulation surpassing industry standards:
  - Thermaglas uPVC double glazed windows and doors with improved thermal rating
  - 125mm composite SIPs (Structural Insulated Panel) floor
  - 200mm insulation in roof
  - Combined thermal and acoustic insulation increase with 115mm wall thickness
  - Lagged underfloor pipes

## INTERIOR

- High internal ceiling
- Luxury carpet with underlay throughout lounge and bedrooms
- Vinyl flooring in kitchen and dining area
- Modern planked ceiling system
- 30kW gas combi-boiler central heating and hot water system
- Radiator thermostats
- Low energy LED ceiling lights
- USB sockets and wireless chargers in bedroom
- Stainless steel sockets throughout

## ENTRANCE HALL

- Entrance utility area with built in boiler cupboard, kitchen cupboards, a small work top with integrated washer / dryer and two extractor fans
- A feature wall with coat hooks, shoe shelving and stylish bench
- Glazed interior door to living area

## LOUNGE

- Freestanding three-seater sofas with two separate chairs, bolsters and scatter cushions and a feature ottoman footstool (Country Cottage) or freestanding two-seater and three-seater sofas with bolsters and scatter cushions and a round steel coffee table with black accents (Urban)
- Dedicated entertainment unit featuring:
  - 43" TV over fireplace and Sky TV cable for connection only
  - Feature TV wall with storage and dedicated shelving and sockets for DVD player
  - Stylish fireplace
- Full height feature radiator
- Framed wall mirror

## KITCHEN / DINING

- Large 'U' shape kitchen with stylish worktops and splash backs
- Glass fronted integrated electric oven and grill
- Five-burner gas hob with central wok burner and electronic ignition
- Curved glass externally vented extractor hood with lights
- Integrated microwave oven (800w)\*
- Integrated fridge and freezer
- Integrated 12 place setting dishwasher
- Wine cooler
- Soft close drawers
- Pop-up socket provision in worktop
- Roof VELUX over kitchen units
- Stylish dining table with bench seating and upholstered chairs
- Feature wall in dining area

## BATHROOM(S)

- Bath with shower over and screen
- Ensuite with shower enclosure and thermostatic shower and inset vanity basin with drawer
- Minuto freestanding toilet
- LED illuminated vanity mirrors with infrared sensor and demisting pad in ensuite and main bathroom
- Chrome finish towel radiators
- Vinyl flooring
- Privacy glass windows
- Extractor fan in main bathroom and ensuite
- Shaver socket

## MAIN BEDROOM

- King-size double bed in main bedroom with lift up storage, feature panel wall and surrounding headboard with reading and background lighting with stylish bedside tables
- King-size Duvalay™ Alba-Ortho mattress providing enhanced orthopaedic care and support for backs. Made with luxury nested pocket springs and topped with the finest springy wool for comfort and durability
- Large his and hers wardrobe with drawers and cupboards, concealed drawers unit with surround large back lit TV position
- Vanity area includes a wardrobe, dressing table and drawers, shelving with feature vanity mirror, and foot stool, stainless steel sockets and wireless charger

## BEDROOMS

- Deeper and more luxurious Aurora Duvalay™ mattress with Crib 5 rated fabric, and featuring 'S-Line' pocket springs and a high-density foam layer for increased and lasting comfort (3ft wide single beds) for all twin rooms
- Tall luxury bedroom headboards with feature panel surround and background and reading lights
- Twin bedroom featuring double wardrobe with drawers, feature backlit TV unit with overhead cupboards and drawers for additional storage, vanity area with dressing table, concealed mirror and stool with stainless steel socket (two bed model) or twin bedroom featuring double wardrobe, vanity area with dressing table, mirror, stool with stainless steel socket and a wall mounted TV (three bed model)
- Roman blinds
- TV sockets & Co-Ax to all bedrooms

## OPTIONS

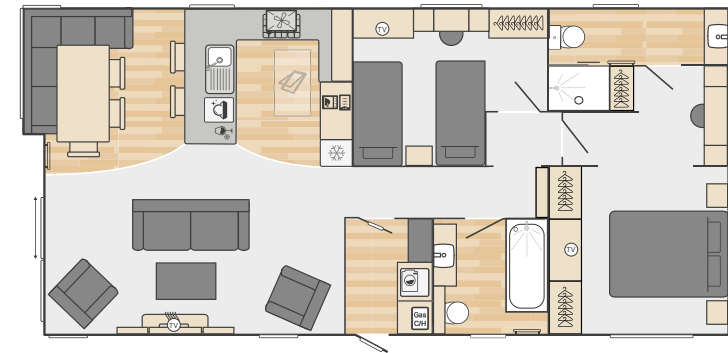
- Freestanding three-seater sofa with fold out occasional bed, replacing standard three-seater sofa (Urban scheme only)
- CanExel exterior options: 'Environmental Acadia' green Canexel, full 'Timberwolf', full 'Mist Grey', full 'Sierra Brown' all with 'Anthracite' window frames
- Wireless programmable room thermostat
- Bluetooth sound system

\*The model shown may have additional / different specification, please check with supplying Swift distributor or park.

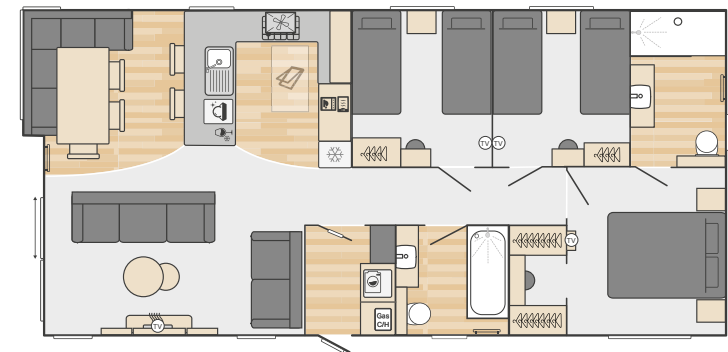


| COUNTRY COTTAGE INTERIOR DESIGN SCHEME                                                                                                                                       | URBAN INTERIOR DESIGN SCHEME                                                                                                                                                         |
|------------------------------------------------------------------------------------------------------------------------------------------------------------------------------|--------------------------------------------------------------------------------------------------------------------------------------------------------------------------------------|
| 'Acanthium' soft furnishing scheme                                                                                                                                           | 'Galaxy' soft furnishing scheme                                                                                                                                                      |
| Kitchen with country classic feel, featuring shaker style cupboards in 'Dakar Grey' with brass cup drawer handles                                                            | Soft black matt modern look doors with minimal black handles and LED lights under 'Levanto' marble effect worktop                                                                    |
| 'Brown Mountain Larch' 40mm worktops and splashbacks                                                                                                                         | White 'Levanto' marble effect 40mm worktop and grey brown lacquered Pine splashback                                                                                                  |
| 1½ premium white granite effect sink/drainер with feature brass tap                                                                                                          | 1½ black matt sink and black tap                                                                                                                                                     |
| 'Whitewood' shiplap feature wall in dining area                                                                                                                              | Naturewall 'Bavaria' plank feature wall in dining area                                                                                                                               |
| Stylish turned leg pedestal dining table with 'Nebraska' top, bench seating and upholstered chairs                                                                           | Stylish X leg dining table with truffle brown 'Denver' Oak top, bench seating and upholstered chairs                                                                                 |
| 'Tournai Stone' effect vinyl flooring in kitchen, dining area and bathrooms                                                                                                  | Herringbone effect vinyl flooring in kitchen, dining area and bathrooms                                                                                                              |
| Utility area with country classic feel, featuring shaker style cupboards in 'Dakar Grey' with brass handles                                                                  | Utility area with soft black matt modern look doors with minimal black handles                                                                                                       |
| Dedicated entertainment unit with LED backlit shelving in two tone                                                                                                           | Dedicated entertainment unit with feature Naturewall panel display with shelving and storage                                                                                         |
| Fireplace with 'Reo' stove fire                                                                                                                                              | Contemporary 'Calido' landscape fire                                                                                                                                                 |
| Large gold frame wall mirror in living area                                                                                                                                  | Black frame wall mirror in living area                                                                                                                                               |
| Contrast feature wall in 'Whitewood' shiplap in living areas and bedrooms                                                                                                    | Contrast feature wall in 'Northwich' in washrooms and bedrooms. 'Bavaria Plank' wall in dining area, slat wall in living area and bedrooms                                           |
| Freestanding three-seater sofa with two separate chairs and scatter cushions with feature ottoman footstool                                                                  | Freestanding two-seater and three-seater sofas bolsters and scatter cushions with round steel coffee table with black accents                                                        |
| King-size double bed in main bedroom with lift up storage, 'Dakar' feature panel with surrounding headboard with reading and background lighting with stylish bedside tables | King-size double bed in main bedroom with lift up storage, feature panel Naturewall slat wall surrounding headboard with reading and background lighting with stylish bedside tables |
| Wardrobe doors in 'Dakar Grey'                                                                                                                                               | Wardrobe doors in soft black                                                                                                                                                         |
| Brass reading and wall lights in bedroom(s)                                                                                                                                  | Feature industrial pipe light in bedrooms                                                                                                                                            |
| Elevated shaker style interior doors                                                                                                                                         | Elevated five panel interior doors                                                                                                                                                   |
| 'Matt Dakar' tongue and groove cottage style panelling splashbacks in bathroom                                                                                               | White 'Levanto' marble effect splashbacks in bathroom with black tap, shower screen and shower                                                                                       |
| Bathroom with chrome bathroom accessories                                                                                                                                    | Bathroom with black bathroom accessories                                                                                                                                             |

## FLOORPLANS



43' x 20' - 2 Bedroom



43' x 20' - 3 Bedroom





# Edmonton Lodge



'Scandinavian' interior scheme

Step inside the much loved Edmonton, now bigger and better than before! This luxury twin unit lodge is now available in three layouts, perfect to suit your families need. For smaller families, the two and three bed layouts offer the perfect arrangement, while the new and exclusive four bed layout caters to larger families without compromising on space. In a choice of two interior schemes there is an Edmonton for everyone and the perfect home away from home.

| Model size | Bedrooms | Main Bed                    | Second double               | Rear Twin Beds              |
|------------|----------|-----------------------------|-----------------------------|-----------------------------|
| 40' x 20'  | 2        | 2.02m x 1.53m (6'8" x 5'0") |                             | 1.83m x 0.92m (6'0" x 3'0") |
| 40' x 20'  | 3        | 2.02m x 1.53m (6'8" x 5'0") |                             | 1.83m x 0.92m (6'0" x 3'0") |
| 43' x 20'  | 4        | 2.02m x 1.53m (6'8" x 5'0") | 1.91m x 1.37m (6'3" x 4'6") | 1.83m x 0.92m (6'0" x 3'0") |

## Features at a glance

Along with the Swift key features on page 8, Edmonton also comes with many desirable extras including:



Central heating



Wardrobe area



Electric fire



Bath



Heated rails



USB sockets





'Scandinavian' interior scheme



'Scandinavian' interior scheme



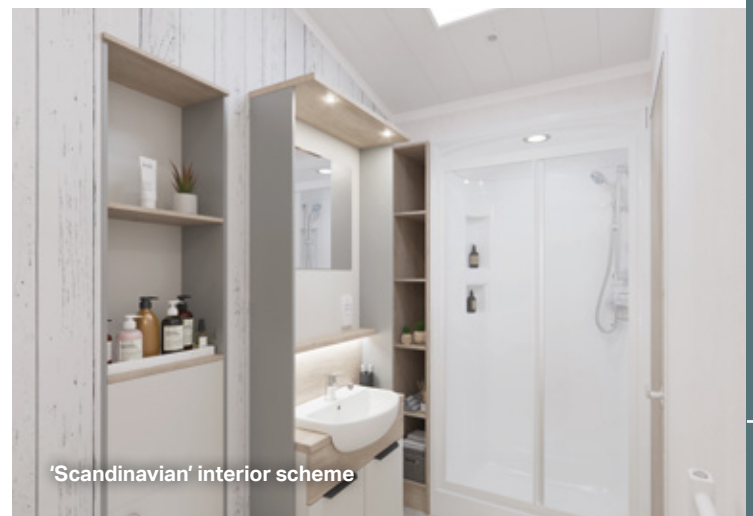
'Scandinavian' interior scheme



'Scandinavian' interior scheme



'Scandinavian' interior scheme



'Scandinavian' interior scheme





'Coastal' interior scheme



'Coastal' interior scheme



'Coastal' interior scheme



'Coastal' interior scheme





'Coastal' interior scheme



'Coastal' interior scheme



'Coastal' interior scheme



# Edmonton Lodge full features

## EXTERIOR

- Residential specification built to BS3632:2023
- 20ft wide twin unit with 10ft and 10ft split
- Fully galvanised Protech 900 chassis, warranted for ten years
- Bonded 'sandwich' exterior wall construction for greater strength
- Distinctive pre-coated 'folded' steel bargeboards with LED lighting to front aspect
- Coated steel pantile roof
- CanExel high density wood composite cladding with durable realistic woodgrain texture in 'Mist Grey' with 'Anthracite' window frames
- Front aspect French doors
- Large front feature windows to dining area
- uPVC windows with push-button security locks
- PVC gutters and down pipes
- Low energy exterior light and downlights under front eaves
- Exterior 240V mains socket

## INSULATION

- Excellent thermal performance and sound insulation:
  - Thermaglas uPVC double glazed windows and doors with improved thermal rating
  - 125mm composite SIPs (Structural Insulated Panels) floor
  - 200mm insulation in roof
  - 115mm insulation in walls
  - Lagged underfloor pipes

## INTERIOR

- Luxury carpet with underlay throughout hallway, lounge and bedrooms
- Hardwearing vinyl flooring in entrance hall, utility, kitchen, dining area and bathrooms
- Modern planked ceiling finish
- 30kW gas combi-boiler central heating and hot water system
- Radiator thermostats
- Low energy LED ceiling lights throughout
- Good provision of double electric sockets throughout
- USB sockets and wireless chargers in bedroom
- All upholstered fabric has Aquaclean technology

## ENTRANCE HALL

- Glazed hallway door
- Entrance utility area with sliding door with a built in boiler cupboard, a small work top with space for optional freestanding washer / dryer and two extractor fans. A feature wall with coat hooks, shoe shelving and stylish boot bench (2 and 3 bed)
- Open entrance utility area with a built in boiler cupboard, a small work top with space for optional integrated washer / dryer and two extractor fans. A feature wall with coat hooks, shoe shelving and stylish boot bench (4 bed)

## LOUNGE

- Freestanding two-seater and three-seater sofas with scatter back cushions and a feature ottoman (Coastal) or Freestanding two-seater and three-seater sofas with scatter back cushions, a upholstered footstool and stylish cluster coffee tables with black accents (Scandinavian)
- Stylish fireplace with 'Reo' fire, 'Dust Grey' feature wall panels and framed seascape picture, separate freestanding TV unit with fixed TV position and Sky TV cable for connection only (Coastal) or dedicated media unit with fixed TV position over fireplace, a long 'Calido' fire and Sky TV cable for connection only, with storage and dedicated shelving (Scandinavian)
- Floor length curtains

## KITCHEN / DINING

- Glass fronted electric 'Thetford' oven and grill
- Four-burner gas hob with electronic ignition
- Integrated 25lt microwave oven (800w)\*
- Curved glass externally vented extractor fan unit with lights
- Integrated fridge and freezer
- Large L Shaped kitchen with feature lighting under cabinets illuminating splashback, stylish worktops and large feature splash backs
- Island unit with breakfast bar and two stools
- Venetian blinds in kitchen window
- Soft close drawers
- Mains socket provision with USB
- Single sink and drainer with stylish taps
- Freestanding stylish dining table and chairs with fabrics
- Feature wall in 'White Wood' with stylish sideboard unit and large round framed wall mirror

- Floor length curtains with curtain pole in dining area (Coastal) or Roman blinds in dining area (Scandinavian)
- Feature lighting above dining table

## BATHROOM(S)

- Main bathroom with domestic bath and thermostatic shower above and inset vanity basin and towel cupboard (2 or 3 bed)
- Jack and Jill main bathroom with entrances from hallway and double bedroom with thermostatic shower above and inset vanity basin and towel cupboard (4 bed)
- En suite with Shower enclosure and thermostatic shower and inset vanity basin with drawer
- Minuto freestanding toilet
- Feature LED downlights on splashback, vanity mirrors with infrared sensor and demisting pad in en suite and main bathroom
- White towel radiators in main bathroom
- Extractor fan in main bathroom and en suite

## MAIN BEDROOM

- King-size double bed in main bedroom with lift up storage. Feature wall in 'White Wood' with surrounding headboard, reading and background lighting and stylish bedside tables
- King-size Duvalay™ Alba-Ortho mattress providing enhanced orthopaedic care and support for backs. Made with luxury nested pocket springs and topped with the finest springy wool for comfort and durability
- Main bedroom with dressing table and stool, overhead feature wall with mirror, overhead TV position and shelving. Walkthrough dressing area leading to en suite with large wardrobes and full length mirror (2 and 3 bed)
- Main bedroom with large double wardrobes, dressing table and stool, drawers and shelving with wall mirror. Feature wall panel overhead TV position and shelf (4 bed)
- Full length curtains

## BEDROOM(S)

- Deeper and more luxurious Aurora Duvalay™ mattress with Crib 5 rated fabric, and featuring 'S-Line' pocket springs and a high-density foam layer for increased and lasting comfort (3ft wide single beds) for all twin rooms
- Secondary double bedroom with double bed and lift up storage. Feature wall in 'White Wood' with surrounding headboard, reading and background lighting and stylish bedside tables (4 bed)
- Twin rooms with tall luxury padded bedroom headboards with feature wall in 'white wood' surround, background and reading lights and stylish bedside tables
- Twin bedroom features two large double wardrobe with centre vanity unit and stool, with mirror and overhead TV position (2 bed). Single wardrobe with attached vanity unit and stool with mirror and upper shelving (3 bed) or single wardrobe with attached vanity unit with mirror and upper shelving (4 bed)
- Secondary double bedroom features large double wardrobe with drawers and dressing table with mirror, shelf, socket and cube stool (4 bed)
- Roman blinds (secondary double bedroom 4 bed, twin bedroom 3 bed)
- Stylish curtains (4 bed and 2 bed twin bedroom)
- TV sockets & Co-Ax to all bedrooms

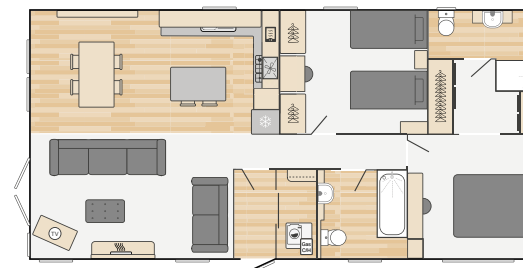
## OPTIONS

- One sliding patio door in place of French doors on the lounge side
- Integrated 12-place setting dishwasher
- Freestanding washer / dryer (2 and 3 bed) or integrated washer / dryer (4 bed)
- Freestanding three-seater sofa with fold out occasional bed, replacing standard three-seater sofa
- CanExel exterior options: 'Environmental Acadia' green, full 'Cliffside', full 'Sierra Brown' all with 'Anthracite' window frames
- Wireless programmable thermostat
- Bluetooth sound system
- Shaving socket in bathroom

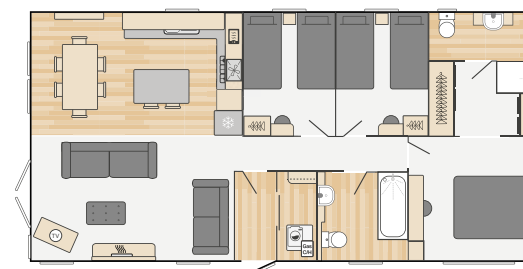
\*The model shown may have additional / different specification, please check with supplying Swift distributor or park.

| COASTAL INTERIOR DESIGN SCHEME                                                                                                                                                                   | SCANDINAVIAN INTERIOR DESIGN SCHEME                                                                                                                                                           |
|--------------------------------------------------------------------------------------------------------------------------------------------------------------------------------------------------|-----------------------------------------------------------------------------------------------------------------------------------------------------------------------------------------------|
| 'Dust Grey' and 'Porcelain' colour scheme                                                                                                                                                        | 'Nebraska' with 'Light Grey' and 'Dust Grey' colour scheme                                                                                                                                    |
| 'St Ives' soft furnishing scheme                                                                                                                                                                 | 'FIKA' soft furnishing scheme                                                                                                                                                                 |
| Kitchen with coastal feel with feature cornice around kitchen units. Shaker style cupboards in 'Porcelain' with stainless steel handles                                                          | Soft light grey modern look doors and minimal black handles                                                                                                                                   |
| 'White Mountain' larch worktops and large feature splashbacks                                                                                                                                    | 'Nebraska' worktops and large feature splashbacks                                                                                                                                             |
| Stainless steel single sink and drainer                                                                                                                                                          | Premium black sink with black 'Abyss' tap                                                                                                                                                     |
| 'Whitewood' shiplap feature wall in dining area with silver framed mirror                                                                                                                        | 'Whitewood' shiplap feature wall in dining area with black framed mirror                                                                                                                      |
| Stylish freestanding 'Albert' table with double pedestal legs in bleached oak legs and mid grey 'Kirsty' chairs                                                                                  | Stylish 'Galway' table with dark grey legs and light wood chairs with upholstered fabric                                                                                                      |
| Dining feature 5 arm pendant light with duck egg shades                                                                                                                                          | Stylish dining pendant with feature figment bulbs                                                                                                                                             |
| Two 'Lucille' bar stools in cayenne silver                                                                                                                                                       | Two 'Cielo' black bar stools                                                                                                                                                                  |
| 'Herringbone' effect vinyl flooring in utility and entrance area, kitchen, dining area and bathrooms                                                                                             | 'Tournai Stone' effect vinyl flooring in utility and entrance area, kitchen, dining area and main bathroom. 'Almeria' black flooring in en suite                                              |
| Freestanding two-seater and three-seater scatter back sofas with scatter cushions and ottoman                                                                                                    | Freestanding two-seater and three-seater sofas with scatter cushions, a feature footstool and stylish cluster coffee tables with black accents                                                |
| Stylish fireplace with 'Reo' fire, 'Dust Grey' feature wall panels and framed seascape picture, separate freestanding TV unit with Sky TV cable for connection only                              | Media wall featuring TV position over fireplace, a long 'Calido' fire and Sky TV cable for connection only, with storage and dedicated shelving                                               |
| King-size double bed in main bedroom with lift up storage. Feature wall in 'White Wood' with surrounding headboard in 'Hugo Indigo', reading and background lighting and stylish bedside tables. | King-size double bed in main bedroom with lift up storage. Feature wall in white wood with surrounding headboard in 'Deluxe Sky', reading and background lighting and stylish bedside tables. |
| Twin bedroom with tall luxury padded bedroom headboards in 'Poker Stellar' with feature wall in white wood surround, background and reading lights and stylish bedside tables                    | Twin bedroom with tall luxury padded bedroom headboards in 'Dakota Lapis' with feature wall in white wood surround, background and reading lights and stylish bedside tables                  |
| Twin bedrooms with round stool (2 and 3 bed)                                                                                                                                                     | Twin bedrooms with square stool (2 and 3 bed)                                                                                                                                                 |

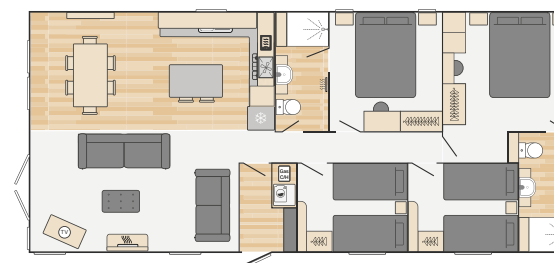
## FLOORPLANS



40' x 20' - 2 Bedroom



40' x 20' - 3 Bedroom



43' x 20' - 4 Bedroom





Bonded walls for a more robust construction

Fusion galvanised chassis for additional protection against rust

# Montreal Lodge



Step inside the Montreal, boasting a stunning farmhouse aesthetic. Designed for families in mind, the Montreal presents a spacious interior and features a practical hallway, ideal for managing muddy boots and pets. With its neutral, on trend design, the Montreal provides the perfect canvas for you to incorporate your own personal style.

| Model size | Bedrooms | Main bed                     | Twin beds                   | Rear twin beds              |
|------------|----------|------------------------------|-----------------------------|-----------------------------|
| 40' x 20'  | 2        | 2.02m x 1.53m (6'8" x 5'0")* | 1.83m x 0.92m (6'0" x 3'0") | N/A                         |
| 41' x 20'  | 3        | 2.02m x 1.53m (6'8" x 5'0")  | 1.83m x 0.92m (6'0" x 3'0") | 1.83m x 0.92m (6'0" x 3'0") |

\*Estimate

## Features at a glance

Along with all the Swift key features on page 8, Montreal comes with many desirable extras including:



Twin unit



Front sliding door



Zip and link mattress



4 burner gas hob



Walk-in dressing room



Vanity area with mirror









# Montreal Lodge full features

## EXTERIOR

- Residential specification built to BS3632:2023
- NEW** 20ft wide twin unit with 10ft and 10ft split
- Protech galvanised chassis with finish warranted for ten years
- Bonded sandwich exterior wall construction for greater strength
- Coated steel pantile roof
- Distinctive pre-coated 'folded' steel bargeboards with LED lighting to front aspect
- CanExel high density wood composite cladding with durable realistic woodgrain texture in 'Mist Grey'
- White uPVC windows with push-button security locks
- PVC gutters and down pipes
- Low energy exterior side light

## INSULATION

- Thermaglas uPVC double glazing
- NEW** improved thermal performance:
  - 125mm PIR insulation in floor
  - 200mm Rock Wool insulation in roof
  - 115mm insulation in walls
  - Lagged underfloor pipes

## INTERIOR

- 'Farmhouse' soft furnishing scheme
- 30kW gas combi-boiler central heating and hot water system
- Luxury carpet with underlay throughout lounge and bedrooms
- NEW** 'Provenza' grey toned vinyl flooring in kitchen/dining/ bathrooms
- 'Tobacco Halifax' oak, 'Stone grey' and 'Truffle brown' woodgrain furniture
- Low energy LED lighting throughout
- USB sockets
- Double electric sockets throughout
- NEW** 'White Ash' wood interior doors
- Front sliding door to the dining area

## ENTRANCE HALL

- Entrance utility area with built in boiler cupboard and storage cupboards in 'Stone Grey' with 'Aerial' knob handles. Feature coat hooks area with shelving in 'Tobacco Halifax' oak, upholstered 'Aston' bench and shoe rack
- Interior door to living area
- Hardwearing entrance floor matt

## LOUNGE

- Wide full height aspect window
- Décor feature wall in 'Espresso'
- Freestanding 'Valentina' two-seater and three-seater sofas with scatter cushions
- 'Tobacco Halifax' oak coffee table with upholstered stools
- 'Tobacco Halifax' oak TV unit and storage with 'Truffle Brown' feature panel and overhead decorative shelf
- 'Pewter' curtain poles with lined curtains

## KITCHEN / DINING

- Shaker style kitchen doors in 'Stone Grey' with 'Pewter' 'Aerial' knob and twister 'D' handles
- 30mm 'Tobacco Halifax' oak worktops with matching splashback
- 'Domapp' glass fronted oven and grill with electronic ignition
- Four-burner gas hob with electronic ignition
- Externally vented cooker hood
- 'Manhattan' chrome tap, stainless steel sink bowl and drainer
- Integrated microwave oven (800w)\*
- Integrated fridge freezer
- 'Tobacco Halifax' oak freestanding dining table with 'Truffle Brown' legs.
- Four 'Freyja Bis' chairs with 'Truffle Brown' legs and 'Aston' cushion pads

## MAIN BEDROOM

- King-size double bed in main bedroom with lift up storage
- Deeper and more luxurious Aurora Duvalay™ mattress with Crib 5 rated fabric, and featuring 'S-Line' pocket springs and a high-density foam layer for increased and lasting comfort
- Bedside cabinets in 'Tobacco Halifax' oak with matching feature headboard
- Decorative feature wall in 'Espresso'
- Large walk in dressing room and vanity area. Open robe hanging area with four 'Stone grey' draws and 'Tobacco Halifax' oak shelf. Vanity area in 'Tobacco Halifax' Oak with large mirror, shelving and upholstered footstool.
- TV position
- Curtain poles with blackout lined curtains
- Good provisions of double sockets

## BEDROOMS

- Deeper and more luxurious Aurora Duvalay™ mattress with Crib 5 rated fabric, and featuring 'S-Line' pocket springs and a high-density foam layer for increased and lasting comfort (3ft wide single beds) for all twin rooms
- Zip and link mattress to make super king size bed in twin bedroom
- Bedside cabinets in 'Tobacco Halifax' oak with matching feature headboard
- Large open wardrobe in 'Tobacco Halifax' oak with matching vanity area, mirror and upholstered stool
- TV position
- Curtain poles with blackout lined curtains
- Good provisions of double sockets

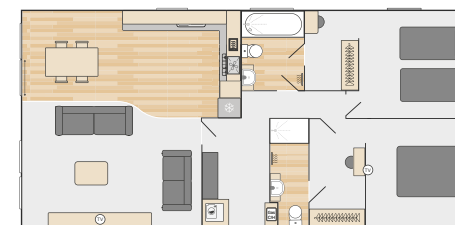
## BATHROOMS

- Jack and Jill bathroom with two entrance doors for private access from hallway and bedroom (2 bed model only)
- Shower cubicle with thermostatic shower in main bathroom
- Vanity shelving in 'Tobacco Halifax' Oak with 'Stone Grey' feature panel
- Dual flush WC
- LED vanity spotlights
- Extractor fan in main bathroom

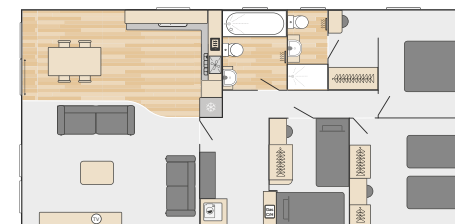
## OPTIONS

- PH 'Environmental Acadia Green' Cladding with 'Anthracite' windows
- CanExel 'Mist Grey' with 'Anthracite' windows
- Deluxe pack – coffee table cubes, footstool, mirrors, picture and window voiles
- Washer dryer
- Dishwasher
- Bluetooth® audio connection to lounge ceiling speakers
- Shaving socket in main bathroom
- Coffee table with upholstered stools

## FLOORPLANS



40' x 20' - 2 Bedroom



41' x 20' - 3 Bedroom

\*The model fitted may differ from that shown in images, please check with supplying dealer or park.





# Vendee Lodge



Escape the everyday in your own country retreat. Blending rural character with modern looks, Vendee Lodge offers residential specification for year-round getaways in the utmost comfort, with a welcoming and cosy interior providing plenty of room for the whole family.

| Model size | Bedrooms | Main Bed                    | Twin Beds                   |
|------------|----------|-----------------------------|-----------------------------|
| 42' x 13'  | 2        | 2.02m x 1.53m (6'8" x 5'0") | 1.90m x 0.75m (6'3" x 2'6") |
| 42' x 14'  | 2        | 2.02m x 1.53m (6'8" x 5'0") | 1.90m x 0.92m (6'3" x 3'0") |

## Features at a glance

Along with the Swift key features on page 8, Vendee also comes with many desirable extras including:



Central heating



Double glazing



Electric fire



Heated rails



Wine rack



Usb sockets









# Vendee Lodge full features

## EXTERIOR

- Residential specification built to BS3632:2023
- Strong I beam and Protech 900 twin axle chassis with galvanised finish, warranted for ten years
- Bonded sandwich exterior wall construction for greater strength
- Coated steel pantile roof
- Distinctive pre-coated 'folded' steel bargeboards with LED lighting to front aspect
- CanExel high density wood composite cladding with durable, realistic woodgrain texture in 'Mist Grey' with 'Anthracite' window frames
- Front sliding doors
- uPVC windows with push-button security locks
- PVC gutters and down pipes

## INSULATION

- Excellent thermal performance and sound insulation:
  - Thermaglas uPVC double glazed windows and doors with improved thermal rating
  - Composite SIPs (Structural Insulated Panel) floor
  - 200mm insulation in roof
  - 115mm insulation in walls
  - Lagged underfloor pipes

## INTERIOR

- 7ft (2.13m) high ceilings at side walls
- 'Acanthium' soft furnishing scheme
- Luxury carpet with underlay
- Hardwearing vinyl flooring in 'Almeria' for the kitchen/dining/bathroom(s)
- 'Nebraska Oak' woodgrain
- Modern planked ceiling system
- Condensing gas combi-boiler central heating and hot water system with radiator thermostat
- Low energy LED lighting
- USB sockets
- Good provision of double electric sockets throughout

## ENTRANCE HALLWAY

- Seat bench featuring coat hooks and shoe storage
- Large mirror and wall unit

## LOUNGE

- Freestanding two-seater and three-seater sofas with scatter cushions
- Complementary footstool with storage
- TV unit with storage, TV provision and Sky TV cable for connection only to TV cabinet
- Additional high level TV point
- Contemporary electric 2kW Optiflame® stove feature fire with mirror over fireplace
- 'Central Tyler' copper effect pendant light feature
- White slatted wooden blinds
- Full height luxury curtains to front aspect
- Contemporary framed colour wall pictures

## KITCHEN / DINING

- 'Belling' stainless steel oven
- Integrated silver extractor hood vented to outside
- Five-burner gas hob with central wok burner with electronic ignition
- 'Brown Mountain Larch' splashbacks
- 40mm 'Brown Mountain Larch' laminate worktops
- Integrated microwave oven (800w)\*
- Integrated fridge and freezer
- White resin bowl and drainer with copper finish tap
- Kitchen with country classic feel. Cupboards in 'Dakar' with 'Larch' woodgrain details, and copper cup door and drawer handles
- Soft close drawers
- Integrated wine rack
- Florence dining table in 'Nebraska Oak' / painted 'Porcelain' with four Combo chairs

## BATHROOM(S)

- Shower cubicle with thermostatic shower and LED downlights
- Dual flush WC with soft close toilet seat
- White heated towel rails
- Vanity storage unit with mirror above
- Additional side storage cupboards
- Extractor fan in both bathrooms

## BEDROOMS

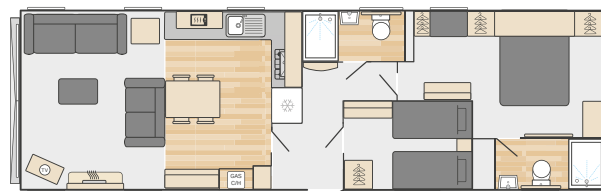
- King-size double bed in main bedroom with lift up storage King-size Duvalay™ Alba-Ortho mattress providing enhanced orthopaedic care and support for backs. Made with luxury nested pocket springs and topped with the finest springy wool for comfort and durability (Main bedroom only)
- Deeper and more luxurious Aurora Duvalay™ single mattresses with Crib 5 rated fabric, and featuring 'S-Line' pocket springs and a high-density foam layer for increased and lasting comfort
- Padded headboard in main bedroom
- Ample storage with bedside units and over bed cupboards in the main bedroom
- Wall mounted bedside lights
- Dressing table with mirror, lighting and storage
- Window seat and TV panel with credenza drawer unit in main bedroom
- Nature inspired wall pictures
- TV sockets and Co-Ax to all bedrooms, plus booster

## OPTIONS

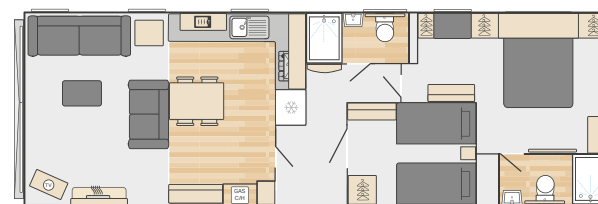
- Lux Pack:
  - Dishwasher
  - Washing machine
  - VELUX window in kitchen
  - Bluetooth® audio connection to lounge ceiling speakers
- Freestanding three-seater sofa with fold out occasional bed, replacing standard three-seater sofa
- Woodgrain exterior in environmental 'Acadia' green CanExel with 'Anthracite' window frames
- Woodgrain exterior in 'Sierra Brown' CanExel with 'Rustic Oak' or 'Anthracite' woodgrain window frames
- Wireless programmable room thermostat
- Shaving socket in bathroom

\*The model shown may have additional / different specification, please check with supplying Swift distributor or park.

## FLOORPLANS



42' x 13' - 2 Bedroom



42' x 14' - 2 Bedroom



# Range at a glance

|                                                                  | TORONTO      | EDMONTON   | MONTREAL            | VENDEE                              |
|------------------------------------------------------------------|--------------|------------|---------------------|-------------------------------------|
| <b>Exterior</b>                                                  |              |            |                     |                                     |
| BS3632:2023 Residential Specification                            | •            | •          | •                   | •                                   |
| Protech 900 chassis                                              | •            | •          | •                   | Protech 900 (14ft)<br>I beam (13ft) |
| Bonded 'sandwich' exterior wall construction                     | •            | •          | •                   | •                                   |
| Coated steel pantile roof                                        | •            | •          | •                   | •                                   |
| Distinctive 'folded' steel bargeboards with lighting             | •            | •          | •                   | •                                   |
| CanExel high density wood composite cladding                     | •            | •          | •                   | •                                   |
| Front aspect French doors                                        | Sliding door | •          | Sliding door        | Sliding doors                       |
| uPVC windows with push-button security locks                     | •            | •          | •                   | •                                   |
| PVC gutters and down pipes                                       | •            | •          | •                   | •                                   |
| Low energy exterior light                                        | •            | •          | •                   | •                                   |
| Environmental exterior                                           | Optional     | Optional   | Optional            | Optional                            |
| <b>Insulation</b>                                                |              |            |                     |                                     |
| 'Thermaglas' uPVC double glazing                                 | •            | •          | •                   | •                                   |
| Composite SIPs (Structural Insulated Panel) floor                | •            | •          | PIR insulation      | •                                   |
| Insulation thickness in roof                                     | 200mm        | 200mm      | 200mm               | 200mm                               |
| Insulation thickness in walls                                    | 115mm        | 115mm      | 115mm               | 115mm                               |
| Lagged underfloor pipes                                          | •            | •          | •                   | •                                   |
| <b>Interior</b>                                                  |              |            |                     |                                     |
| Condensing gas combi-boiler central heating and hot water system | •            | •          | •                   | •                                   |
| Radiator thermostats                                             | •            | •          | •                   | •                                   |
| Luxury carpet with underlay throughout lounge and bedrooms       | •            | •          | •                   | •                                   |
| Hardwearing, durable vinyl flooring in uncarpeted rooms          | •            | •          | •                   | •                                   |
| Low energy LED lighting throughout                               | •            | •          | •                   | •                                   |
| Planked interior ceiling system                                  | •            | •          | •                   | •                                   |
| USB double socket                                                | •            | •          | •                   | •                                   |
| Woodgrain                                                        | Nebraska Oak | Tisano Oak | Tobacco Halifax Oak | Nebraska Oak                        |
| <b>Lounge</b>                                                    |              |            |                     |                                     |
| Freestanding sofa(s) with scatter cushions                       | •            | •          | •                   | •                                   |
| Armchair                                                         | •            |            |                     |                                     |
| Pull-out sofa bed mechanism                                      | Optional     | Optional   |                     | Optional                            |
| Coffee table                                                     | Optional     | •          | •                   | Upholstered foot stool              |
| Contemporary electric fire                                       | •            | •          |                     | •                                   |
| Branded TV                                                       | 43"          |            |                     |                                     |
| Provision for Sky+ connection                                    | •            | •          | •                   | •                                   |
| Bluetooth audio connection to lounge ceiling speaker             | Optional     | Optional   | Optional            | Optional (with Lux Pack)            |
| Large framed wall pictures/mirror                                | Large mirror | •          | Optional Delux pack | Large mirror                        |

|                                                                                                                            | TORONTO                   | EDMONTON                | MONTREAL                | VENDEE                   |
|----------------------------------------------------------------------------------------------------------------------------|---------------------------|-------------------------|-------------------------|--------------------------|
| <b>Kitchen/dining</b>                                                                                                      |                           |                         |                         |                          |
| Glass fronted oven and grill with electronic ignition                                                                      | •                         | •                       | •                       | Integrated gas oven      |
| 4-burner gas hob with electronic ignition                                                                                  | 5-burner inc wok burner   | •                       | •                       | 5-burner inc wok burner  |
| Integrated fridge and freezer                                                                                              | •                         | •                       | •                       | •                        |
| Microwave oven                                                                                                             | •                         | •                       | •                       | •                        |
| Wine cooler                                                                                                                | •                         |                         |                         |                          |
| Integrated 12 place setting dishwasher                                                                                     | •                         | Optional                | Optional                | Optional (with Lux Pack) |
| Built-in washer dryer (except Vendee) with furniture door                                                                  | Integrated washer / dryer | Optional washer / dryer | Optional washer / dryer | Optional (with Lux Pack) |
| 1½ sink bowl/drainer                                                                                                       | •                         | Single sink             | Single sink             | Single White Granite     |
| Laminate worktops with matching upstands                                                                                   | •                         | •                       | •                       | •                        |
| Soft shut drawers                                                                                                          | •                         | •                       | •                       | •                        |
| VELUX rooflight in kitchen ceiling                                                                                         | •                         |                         |                         | Optional (with Lux Pack) |
| Freestanding dining suite                                                                                                  | •                         | •                       | •                       | •                        |
| Lux pack - dishwasher, washing machine, VELUX window in kitchen and Bluetooth® audio connection to lounge ceiling speakers |                           |                         |                         | Optional                 |
| Cupboard housing gas central heating boiler                                                                                |                           |                         |                         | •                        |
| <b>Utility room</b>                                                                                                        |                           |                         |                         |                          |
| Gas central heating boiler                                                                                                 | •                         | •                       | •                       |                          |
| Freestanding washer/dryer                                                                                                  | •                         | Optional                | Optional                |                          |
| <b>Washrooms</b>                                                                                                           |                           |                         |                         |                          |
| Shower cubicle with thermostatic shower in main bathroom                                                                   | •                         |                         |                         | •                        |
| Bath with thermostatic shower over                                                                                         | •                         | Main Bathroom           | Main Bathroom           |                          |
| Dual flush WC                                                                                                              | •                         | •                       | •                       | •                        |
| Extractor fan in main bathroom and en suite                                                                                | •                         | •                       | •                       | •                        |
| Chrome finish towel radiator in main bathroom and en suite                                                                 | •                         | White                   | •                       | White                    |
| LED vanity lighting                                                                                                        | •                         | •                       | •                       | •                        |
| Shaver socket in bathroom                                                                                                  | •                         | Optional                | •                       | Optional                 |
| <b>Bedrooms</b>                                                                                                            |                           |                         |                         |                          |
| King-size double bed in main bedroom with Alba Ortho Mattress                                                              | •                         | •                       | •                       | •                        |
| Gas strut assisted lift-up bed allowing easy access to storage area                                                        | •                         | •                       | •                       | •                        |
| Duvalay™ Crib 5 mattress                                                                                                   | •                         | •                       | •                       | •                        |
| Padded headboard(s)                                                                                                        | •                         | •                       |                         | Main Bedroom             |
| Reading lights                                                                                                             | •                         | •                       |                         | •                        |
| TV sockets & Co-Ax to all bedrooms plus booster                                                                            | •                         | •                       | •                       | •                        |
| Walk-in wardrobe in main bedroom                                                                                           | •                         | 2 and 3 bed             | •                       |                          |
| <b>Safety</b>                                                                                                              |                           |                         |                         |                          |
| Main linked Smoke and heat alarms to all habitable rooms                                                                   | •                         | •                       | •                       | •                        |
| 5-year carbon monoxide detectors                                                                                           | •                         | •                       | •                       | •                        |
| Fire extinguisher                                                                                                          | •                         | •                       | •                       | •                        |
| Fire Blanket                                                                                                               | •                         | •                       | •                       | •                        |



# Exterior finishes

Swift lodges are designed for long-lasting great looks, both inside and out. The exterior is clad in CanExel high density wood composite cladding with durable, realistic woodgrain texture for a superb finish, while a range of natural colour treatments add extra character. Corelux cladding is also available as an option on selected ranges. Corelux is a two-tone wood-texture effect premium cladding that boasts a thicker alloy aluminium plank that can withstand extreme weather. Its durability also extends to a UV protection coating that prevents fading, degrading and expansion.

| Cladding              | Cliffside | Black and Timber wolf | Timberwolf | Mist Grey | Sierra Brown | Acadia |
|-----------------------|-----------|-----------------------|------------|-----------|--------------|--------|
| <b>Models</b>         |           |                       |            |           |              |        |
| <b>Toronto Lodge</b>  |           | Standard              | Option     | Option    | Option       | Option |
| <b>Edmonton Lodge</b> | Option    |                       |            | Standard  | Option       | Option |
| <b>Vendee Lodge</b>   |           |                       |            | Standard  | Option       | Option |
| <b>Montreal Lodge</b> |           |                       |            | Standard  |              | Option |

Timberwolf



Cliffside



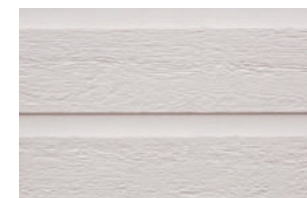
Sierra Brown



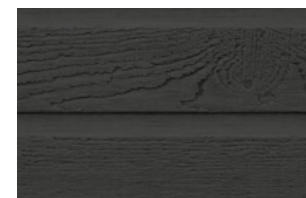
Acadia Green



Mist Grey



Black



# Holiday Home Decking & Skirting Systems

Designed to enhance the outdoor lifestyle of today's modern Holiday Homes & Static Caravans, leading UK manufacturer FENSYS supply the very highest quality & specification, low maintenance UPVC Decking and Skirting systems.

## Contact us today and here's what you will get:

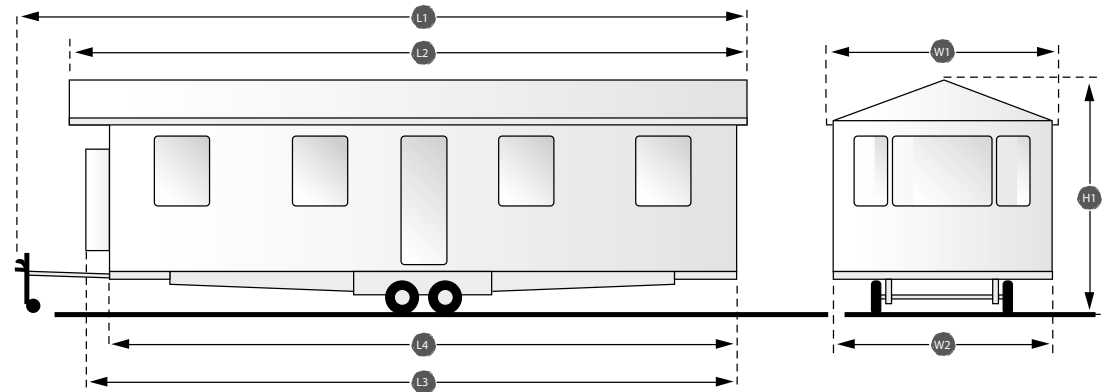
- ✓ **Expertise...**  
Expert advice and products from a blue chip company doubled with professional care and attention provided by our extensive network of qualified sales and installation service providers.
- ✓ **Experience...**  
A British company with over 30 years experience in manufacturing. Our team of technical advisers, market specialists and customer service staff are on hand to help and advise.
- ✓ **Quality...**  
Superior market leading product, Fensys manufacture the very highest specification low maintenance decking and balustrade products.
- ✓ **Engineered to last...**  
Professionally fitted and exceptionally strong Fensys even offer a galvanised metal sub-frame up grade to further extend the products life.
- ✓ **Designed to please...**  
Slip resistant and bare foot friendly our natural tone deck board colour options are designed to give years of untroubled enjoyment.
- ✓ **Made to match...**  
Choose from 8 balustrade colour options to match or contrast your holiday home; white, cream, beige as well as 4 window matching wood grains are all available.
- ✓ **Your ideas welcomed...**  
Fensys offer standard as well as bespoke veranda designs, let our team of professional advisers help turn your dream into a reality.
- ✓ **Customised by you...**  
Accessorise with our hand rail style options 'Madison or Georgian', bowed spindles, glass panels, post lights, gates, ramps, solid and ranch style skirting.
- ✓ **Local coverage...**  
We have the largest network of professional sales and installation service providers. Covering the whole of the U.K. and beyond, let us put you in touch with our local agent today.





# Dimensions

- L1** Overall length including detachable towbar
- L2** Overall length excluding detachable towbar
- L3** Body length (including bay where applicable)
- L4** Body length at floor level
- W1** Overall width including gutters and down pipes
- W2** Width at floor level
- H1** Overall height



| Model                      | L1                | L2               | L3               | L4               | W1              | W2              | H1              |
|----------------------------|-------------------|------------------|------------------|------------------|-----------------|-----------------|-----------------|
| Toronto Lodge 43x20-2 bed  | 13.97m (45' 10")  | 13.19m (43' 3")  | 12.97m (42' 6")  | 12.67m (41' 7")  | 6.42m (21' 1")  | 6.15m (20' 2")  | 4.13m (13' 6")  |
| Toronto Lodge 43x20-3 bed  | 13.97m (45' 10")  | 13.19m (43' 3")  | 12.97m (42' 6")  | 12.67m (41' 7")  | 6.42m (21' 1")  | 6.15m (20' 2")  | 4.13m (13' 6")  |
| Edmonton Lodge 40x20-2 bed | 13.34m (43' 9")   | 12.77m (41' 11") | 12.34m (40' 6")  | 12.34m (40' 6")  | 6.42m (21' 1")  | 6.15m (20' 2")  | 4.13m (13' 6")  |
| Edmonton Lodge 40x20-3 bed | 13.34m (43' 9")   | 12.77m (41' 11") | 12.34m (40' 6")  | 12.34m (40' 6")  | 6.42m (21' 1")  | 6.15m (20' 2")  | 4.13m (13' 6")  |
| Edmonton Lodge 43x20-4 bed | 13.97m (45' 10")  | 13.40m (43' 11") | 12.97m (42' 6")  | 12.97m (42' 6")  | 6.42m (21' 1")  | 6.15m (20' 2")  | 4.13m (13' 6")  |
| Montreal Lodge 40x20-2 bed | 13.37m (43' 10")* | 12.79m (41' 1")* | 12.37m (40' 7")* | 12.37m (41' 1")* | 6.42m (21' 1")* | 6.15m (20' 2")* | 4.07m (13' 4")* |
| Montreal Lodge 41x20-3 bed | 13.67m (44' 10")* | 13.10m (42' 6")* | 12.68m (41' 7")* | 12.68m (41' 7")* | 6.42m (21' 1")* | 6.15m (20' 2")* | 4.07m (13' 4")* |
| Vendee Lodge 42x13-2 bed   | 13.77m (45' 2")   | 13.15m (43' 2")  | 12.77m (41' 11") | 12.77m (41' 11") | 4.29m (14' 1")  | 4.01m (13' 2")  | 3.75m (12' 4")  |
| Vendee Lodge 42x14-2 bed   | 13.77m (45' 2")   | 13.15m (43' 2")  | 12.77m (41' 11") | 12.77m (41' 11") | 4.59m (15' 1")  | 4.32m (14' 2")  | 3.83m (12' 7")  |



## Only Swift approved partners sell approved Swift lodges

Swift wants to make sure your buying experience is the best it can be. When you buy from a Swift Approved Partner, you can rest assured that your lodge is fully supported by Swift Group and the supplying distributor.

The benefits of buying from a Swift Approved Partner include:

- Swift Group Approved Warranty
- Dealer access to Swift Connect aftersales support
- Approved spare parts
- Approved engineers
- Access to Swift Approved technical engineers
- Product on display at distributors
- Financial services to help with your purchase\*

Find your nearest Swift Approved Partner from our list on the back of the brochure or the Swift Holiday Homes website, [swiftholidayhomes.co.uk](http://swiftholidayhomes.co.uk), and look out for the Swift Approved Partner signs in dealerships.

\* Subject to status



Find out more at [swiftholidayhomes.co.uk](http://swiftholidayhomes.co.uk)



Brochures



Layouts



Dealer



Social





## Distribution Partners

**Cumbria**  
**Kendal Caravans**  
Kendal  
Tel: 01539 823659  
kendalcaravans.co.uk



**Devon**  
**Surf Bay Leisure**  
Winkleigh  
Tel: 01837 680100  
surfbayleisure.co.uk



**Dorset**  
**Surf Bay Leisure**  
Bridport  
Tel: 01308 427444  
surfbayleisure.co.uk

**Durham**  
**Ideal Caravans**  
Durham  
Tel: 0191 378 0146  
idealcaravans.co.uk

**Hampshire**  
**PM Leisure**  
Hayling Island  
Tel: 023 9246 7722  
pmleisure.co.uk

**Lancashire**  
**Westfield Caravans**  
Blackpool  
Tel: 01253 301505  
westfieldcaravans.co.uk

**Lincolnshire**  
**Seymours Caravans**  
Skegness  
Tel: 01754 764270  
seymourscaravans.co.uk

**TLC Skegness**  
Skegness  
Tel: 01754 875050  
theleisurecompany.co.uk

**Norfolk**  
**McDonnell Caravans**  
Kings Lynn  
Tel: 01553 636243  
mcdonnellcaravans.co.uk

**Parklands Leisure**  
Wells-next-the-Sea  
Tel: 01328 710166  
parklandsleisure.co.uk

**Pioneer Caravans**  
Peterborough  
Tel: 01733 222244  
pioneercaravans.co.uk

**Northumberland**  
**Ideal Caravans**  
Adderstone  
Tel: 0191 378 6615  
idealcaravans.co.uk

**Shropshire**  
**Salop Leisure Ltd**  
Shrewsbury  
Tel: 01743 282400  
salopleisure.co.uk



**Somerset**  
**Surf Bay Leisure**  
Bream  
Tel: 01278 751171  
surfbayleisure.co.uk

**Worcestershire**  
**Salop Leisure**  
Worcester  
Tel: 01299 878872  
salopleisure.co.uk

**Yorkshire**  
**Bridlington**  
Caravan Centre  
Bridlington  
Tel: 01262 606777  
bridlingtoncaravans.com



**Yorkshire Holiday Homes**  
Wetherby  
Tel: 01937 849128  
yorkshirehh.co.uk

**Ireland**  
**Harry Farrell & Sons Ltd**  
Dublin  
Tel: +353 1 4589410  
harryfarrellsons.ie

**Wallace Mobile Homes**  
Co Wexford  
Tel: +353 51 511435  
wallacemobilehomes.com

**Burkes Caravans**  
Co Cork  
Tel: +353 21 4646796  
burkescaravans.com

**Clancys Mobile Homes**  
Co Limerick  
Tel: 353 85 8582793  
clancysmobilehomes.ie

**Northern Ireland**  
**Sandycove Holiday Homes**  
Donaghadee  
Tel: 028 4275 8200  
sandycove.co.uk

**Hayes Caravans**  
Dungannon  
Tel: 0288 7767575  
hayescaravans.com

**Wales**  
**Blackhills Caravan**  
Sales  
Gower  
Tel: 01792 851221  
blackhillscaravansales.co.uk



**Lloyds Caravan &**  
Lodge Sales  
Towyn  
Tel: 01745 832050  
lloyds-caravans.co.uk



**Salop Leisure**  
Machynlleth  
Tel: 01654 705900  
salopleisure.co.uk

**Mon Caravans**  
Anglesey  
Tel: 01248 711070  
moncaravans.com



**Blackhills Caravan**  
Sales  
Tenby  
Tel: 01834 818840  
blackhillscaravansales.co.uk



**Belgium**  
**Caravancentrum Roels**  
Tel: +32 (0)9 369 20 26  
caravancentrumroels.be

**Germany**  
**De-Bergjes**  
info@bergjes-ostsee.de  
+49 (0) 4533 78 54947

**Holland**  
**De-Bergjes**  
+31 (0)475 495 079  
info@bergjes.nl

Visit [swiftholidayhomes.co.uk](http://swiftholidayhomes.co.uk)



This brochure does not constitute an offer by Swift Group Limited (Swift). Swift reserves the right to alter specifications and prices at any time as materials and conditions demand. Distributors and dealers sell Swift products on their own account and not as agents of Swift. Accordingly, they have no authority to bind Swift or to make any representation or undertaking whatsoever on behalf of Swift. Please note, within this brochure, concept imagery may be used and therefore final specifications may be subject to change. Please confirm with your supplying dealer. All props are for photographic purposes only and are not included in the specification. Models shown may be fitted with optional extras. Issued September 2024.

 **MANUFACTURED  
IN BRITAIN**